



Certificate of Analysis

Sample: NA11209001-001

Harvest/Lot ID: 17003-9

Batch#: 17003-9

Parent Batch Id:

METRC Package# N/A

Batch Date: 12/07/21

Sample Size Received: 10.5 gram

Total Weight/Volume: N/A

Retail Product Size: 65 gram

Ordered : 12/07/21

sampled : 12/07/21

Completed: 12/20/21 Expires: 12/20/22

Sampling Method: SOP Client Method

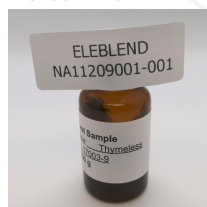
PASSED

Page 1 of 1

Dec 20, 2021 | Eleblend -
Massachusetts

323 Manley Street
West Bridgewater, MA, 02379, US

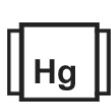
PRODUCT IMAGE



SAFETY RESULTS



Pesticides
NOT TESTED



Heavy Metals
NOT TESTED



Microbials
PASSED



Mycotoxins
PASSED



Residuals
Solvents
NOT TESTED



Filtration
NOT TESTED



Water Activity
NOT TESTED



Moisture
NOT TESTED



Terpenes
NOT TESTED

CANNABINOID RESULTS



Total THC
ND

TOTAL THC/Container : 0 mg



Total CBD
0.476%

TOTAL CBD/Container : 309.4 mg



Total Cannabinoids
0.502%

Total Cannabinoids/Container
: 326.3 mg

	D9-THC	THCA	CBD	CBDA	D8-THC	CBN	CBC	CBG	CBGA	CBDV	THCV
%	ND	ND	0.447	0.029	ND	0.011	0.015	ND	ND	ND	ND
mg/g	ND	ND	4.47	0.29	ND	0.11	0.15	ND	ND	ND	ND
LOD	0.001	0.001	0.001	0.001	0.001	0.001	0.001	0.001	0.001	0.001	0.001
LOQ	0.001	0.001	0.001	0.001	0.001	0.001	0.001	0.001	0.001	0.001	0.001

Cannabinoid Profile Test

Analyzed by 53	Weight 3.03g	Extraction date : 12/13/21 03:12:48	Extracted By : 53
Analysis Method -SOP.T.40.020.MA, SOP.T.30.050.MA	Reviewed On - 12/13/21 18:19:51	Batch Date : 12/13/21 07:40:43	
Analytical Batch -NA000438POT	Instrument Used : NA-HPLC-002 (Potency- MIPS & Low Conc Derivatives)	Running On : 12/13/21 12:38:28	

Reagent	Dilution	Consums. ID
120621.R03	400	18/03/20
112421.R11		9291.271
120921.R01		00310748
092821.10		947.271
092821.16		12058-034CD-034C
081621.02		108C4-108AJ
		108C6-108A
		201104
		289072151

Full spectrum cannabinoid analysis utilizing High Performance Liquid Chromatography with UV detection (HPLC-UV). (Method: SOP.T.30.050 for sample prep and Shimadzu High Sensitivity Method SOP.T.40.020 for analysis. LOQ for all cannabinoids is 1 mg/L). Total THC = d9THC + THCA. Total CBD = CBD + CBDA. Total Cannabinoids = Total of all available cannabinoids.

This report shall not be reproduced, unless in its entirety, without written approval from Kaycha Labs. This report is an Kaycha Labs certification. The results relate only to the material or product analyzed. Test results are confidential unless explicitly waived otherwise. Void after 1 year from test end date. Cannabinoid content of batch material may vary depending on sampling error. IC=In-control QC parameter, NC=Non-controlled QC parameter, ND=Not Detected, NA=Not Analyzed, ppm=Parts Per Million, ppb=Parts Per Billion. Limit of Detection (LOD) and Limit Of Quantitation (LOQ) are terms used to describe the smallest concentration that can be reliably measured by an analytical procedure. RPD=Reproducibility of two measurements. Action Levels are State determined thresholds for human safety for consumption and/or inhalation. The result >99% are variable based on uncertainty of measurement (UM) for the analyte. The UM error is available from the lab upon request. The "Decision Rule" for the pass/fail does not include the UM.

Brian Shandra
Lab Director

State License # IL281349
ISO Accreditation # 97164



Signature

12/20/21

Signed On